

collection 2025



patron®

creative in care

Quality guarantee



Company PATRON is ISO 13485:2016 and ISO 9001:2015 certified.
Products fulfils all appropriate hygienic and safety EC-standards and regulations: EN 12183, EN 12182, EN 1130, EN 14971, ISO 7176, etc.
Used materials fulfil high hygienic and technical requirements and ensure the top level of quality.

Our certification

ISO 13485:2016



ISO 9001:2015



CERTIFICATE NO. 25247/A/0001/Cz



Medical device



Products shown in this catalogue are manufactured, promoted and sold as medical devices in accordance with valid EU regulations (MDR 2017/745).

CONTENTS

● REHAB-BUGGIES

- Fully adjustable
- Semi adjustable
- Hybrid solutions

● REHAB-STROLLERS

- Fully adjustable
- Semi adjustable
- Hybrid solutions

● SEATING AND POSITIONING POSTURAL PRODUCTS

- Fully adjustable

● MODULAR CHASSIS

- high-low modular chassis
- modular stroller chassis-CSI versions

● SPECIALTY PRODUCTS

- rehab-strollers for twins and siblings
-

REHAB-BUGGIES

Fully adjustable

- **CORZO**
-

Semi adjustable

- **CORZINO**
-

Hybrid solutions

- **PIPER**
-



CORZO Xcountry

Fully adjustable comfort rehab-buggy

CORZO



- advanced rehab buggy
- can grow
- 4 sizes
- High load capacity (up to 75 kg)
- Lightweight&Compact folding
- seat base tension adjustment

CORZO

CORZO is an advanced rehab buggy available in 4 sizes. The frame has a range of built-in adjustments such as seat depth and height to keep the buggy growing with the child. Corzo can be fitted with supportive accessories to enable it to be used as a short term transit buggy for users with severe seating needs. Fully foldable undercarriage is produced from lightweight alloy profiles with powder coating finish. Buggy is designed with easy and optimized buggy folding system, wheels of 175/265 mm, light frame, 5-point harness ensuring high safety and comfortable handling. Those features make the products very well suitable for in-town conditions and public transportation, but as well as for light outdoor activities.

Can grow

Size adjustable frame extends the life of the buggy.





1-piece foldable footrest



2-piece 3D-Flexi footrest



backrest Height Extension (only size 38 and 42)

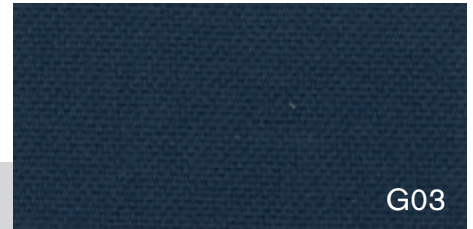
foldable footrest for easy boarding

sizes and patterns

4 sizes



Ruby red





Dark blue

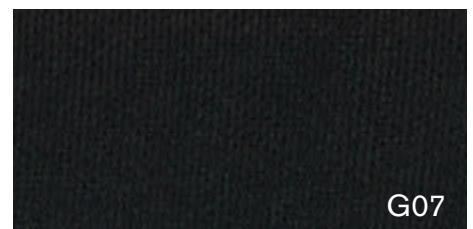
indicative size guide



Grass green

	height of the user			
	30	34	38	42
	110 - 135 cm	115 - 150 cm	120 - 170 cm	120 - 170 cm

	maximum user weight			
	30	34	38	42
kg	45,0 kg	55,0 kg	75,0 kg	75,0 kg



Black

colour range



Ruby red



Dark blue



Grass green



Black

accessories



Canopy



Comfort seat cover



2-piece 3D-Flexi footrest



Headrest



Abduction block



Armrest foldable (set)



Basket - textile



Chest immo. belt



Extended side protection



Thigh fixation



Fixation waistcoat



H-style harness



Foot fixation



Workboard

.... and
much more
accessories!

according to the actual list

The product had been successfully crash tested and fulfilled all the requirements of EN ISO 7176/19.

It enables to use the rehab-buggy not only for a common duty, but as well as for the transportation in specially adjusted motor vehicles, equipped with the anchoring points and equipment.



specification

Standard equipment:

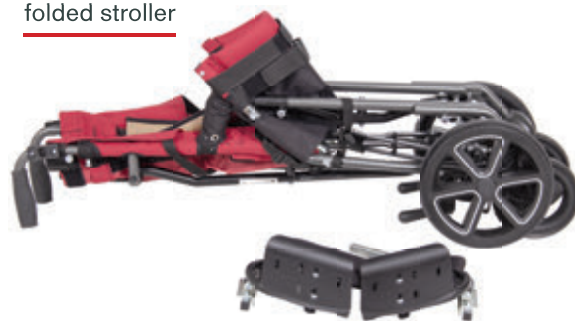
- seat depth adjustable
- backrest height adjustable
- footrest height adjustable and foldable (angle adj.*)
- backrest angle adjustable (2 positions)
- backrest height extension (size 38, 42 only)
- 5-point immo. harness with crotch belt and shoulder padding
- Comfort side protection
- 175 / 265 mm solid wheels
- cover patterns and frame colors according to current offer



order codes

Products	
CORZO Xcountry 30	CRX30RP02
CORZO Xcountry 34	CRX34RP02
CORZO Xcountry 38	CRX38RP02
CORZO Xcountry 42	CRX42RP02

folded stroller



	CRX30	CRX34	CRX38	CRX42
Seat width [mm]	300	340	380	420
Seat depth [mm]	250-310	290-370	310-380	330-390
Backrest height [mm]	550-650	580-680	630-730 (880)	650-750 (900)
Seat to footplate [mm]	270-410	290-430	300-470	310-480
Seat angle	24°/23°	24°/23°	22°/21°	22°/21°
Backrest angle	91° - 93°	91° - 94°	90° - 93°	90° - 93°
Weight	13,0 kg	13,1 kg	15,0 kg	16,0 kg
Maximum load	45,0 kg	55,0 kg	75,0 kg	75,0 kg
Total length [mm]	980	980	1050	1050
Total width [mm]	527	590	620	650
Total height /with adj.handle [mm]	980/1080	980/1080	1190	1220
Brake	foot oper.	foot oper.	foot oper.	foot oper.
Folded stroller length [mm]	1160	1180	1200	1200
Folded stroller width [mm]	330	340	340	400
Folded stroller height [mm]	320-400	340-420	340-420	340-420



CORZINO

Semi adjustable rehab buggy



- Comfort & elegant
- Seat base tension adjustment
- Lightweight&Compact folding
- Variability in use
- 4 different sizes
- High load capacity (up to 75 kg)



variants

Xcountry

Classic

Basic

CORZINO

Comprehensive-range of undercarriages in 4 sizes is the base for the CORZINO's line of rehab-buggies. This product line is produced in sizes 30, 34, 38 and 42 and it is determined for short-stay usage of children with special needs. Fully foldable undercarriage of specific authentic design is produced from lightweight profiles with powder coating finish. Buggy is equipped with optimized buggy-folding system, wheels of 175/265 mm, light frame, 5-point fixation harness, ensuring high safety and comfortable handling, high maximum load (up to 75 kg - size 38, 42) and very easy and quick folding.

Buggy offers as well as fully height adjustable footrest and detachable backrest height extension (size 38, 42 only). CORZINO is available in 3 variants , premium - Xcountry , standard - Classic and budget Basic version.

Seating and Positioning



premium padded
comfortable upholstery



reinforced back
upholstery



seat base tension
adjustment



2-piece 3D-Flexi
footrest



1-piece foldable
footrest

backrest Height Extension
(only size 38 and 42)



angle adjustable
footplate



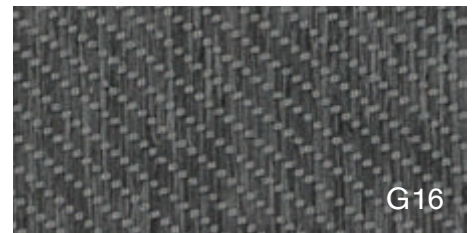
height adjustable
footrest



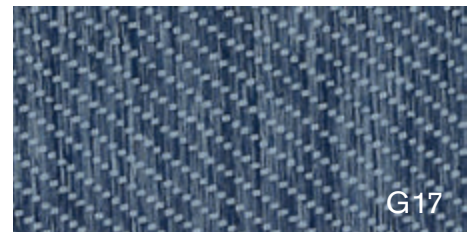
compact folding

sizes and patterns

4 sizes



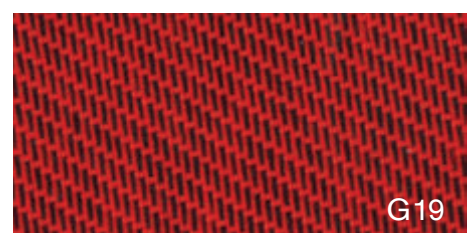
Slate grey



Denim blue





Pea green



Ruby red

indicative size guide

	height of the user			
	30	34	38	42
	100 - 125 cm	105 - 140 cm	125 - 165 cm	125 - 165 cm

	maximum user weight			
	30	34	38	42
kg	45,0 kg	55,0 kg	75,0 kg	75,0 kg

colour range



Slate grey



Denim blue

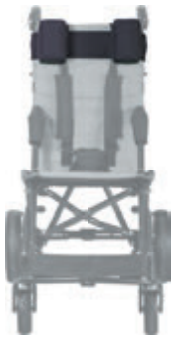


Pea green



Ruby red

accessories



headrest adjustable



headwings



side trunkrest adjustable



abduction block



feet fixation



H-style harness



immobilisation waistcoat



Comfort side protection



two-point
immobilisation belt



two-piece
3D flexi footrest



summer footmuff



comfort seat cover



canopy



rain cover

.... and
much more
accessories!

according to the actual list

The product had been successfully crash tested and fulfilled all the requirements of EN ISO 7176/19.

It enables to use the rehab-buggy not only for a common duty, but as well as for the transportation in specially adjusted motor vehicles, equipped with the anchoring points and equipment.



CORZINO Xcountry

Semi adjustable comfort rehab buggy



Xcountry



- premium padded comfortable upholstery
- reinforced back upholstery
- two-piece 3-D Flexi Footrest
- backrest Extension (on 38 and 42)
- comfort Side Protection

specification

Standard equipment:

- well padded ergonomical seat cover with reinforced back
- comfort side protection
- footrest height adjustable and foldable (angle adj.*)
- backrest angle adjustable (2 positions)
- 5-point immo. harness with crotch belt and shoulder padding
- backrest height extension (size 38, 42 only)
- 175/265 mm solid wheels
- cover patterns and frame colors according to current offer

order codes

Products	
CORZINO Xcountry 30	CNX30RP02
CORZINO Xcountry 34	CNX34RP02
CORZINO Xcountry 38	CNX38RP02
CORZINO Xcountry 42	CNX42RP02



	CNX30	CNX34	CNX38	CNX42
Seat width [mm]	300	340	380	420
Seat depth [mm]	280	330	380	380
Backrest height [mm]	550	650	650 (820)	660 (830)
Seat to footplate [mm]	270-410	290-430	300-470	320-480
Seat angle	22°/21°	23°/22°	22°/21°	23°/22°
Backrest angle	91° - 93°	91° - 94°	90° - 93°	90° - 93°
Weight	13,0 kg	13,1 kg	15,0 kg	16,0 kg
Maximum load	45,0 kg	55,0 kg	75,0 kg	75,0 kg
Total length [mm]	980	980	1050	1050
Total width [mm]	530	590	620	650
Total height [mm]	970	1040	1230	1270
Brake	foot oper.	foot oper.	foot oper.	foot oper.
Folded stroller length [mm]	1160	1180	1200	1200
Folded stroller width [mm]	340	340	370	400
Folded stroller height [mm]	350	370	360	360

CORZINO Classic

Semi adjustable standard rehab buggy



Classic



- great ratio of usage value and price
- two-piece 3-D Flexi Footrest
- backrest Extension (on 38 and 42)
- comfort Side Protection

specification

Standard equipment:

- footrest height adjustable and foldable (angle adj.*)
- backrest angle adjustable (2 positions)
- 5-point immo. harness with crotch belt and
- shoulder padding
- backrest height extension (size 38, 42 only)
- 175/265 mm solid wheels
- cover patterns and frame colors according to current offer

order codes

Products	
CORZINO Classic 30	CNC30RP02
CORZINO Classic 34	CNC34RP02
CORZINO Classic 38	CNC38RP02
CORZINO Classic 42	CNC42RP02



	CNC30	CNC34	CNC38	CNC42
Seat width [mm]	300	340	380	420
Seat depth [mm]	280	330	380	380
Backrest height [mm]	550	650	650 (820)	660 (830)
Seat to footplate [mm]	270-410	290-430	300-470	320-480
Seat angle	22°/21°	23°/22°	22°/21°	23°/22°
Backrest angle	91° - 93°	91° - 94°	90° - 93°	90° - 93°
Weight	12,5 kg	12,6 kg	14,5 kg	15,5 kg
Maximum load	45,0 kg	55,0 kg	75,0 kg	75,0 kg
Total length [mm]	980	980	1050	1050
Total width [mm]	530	590	620	650
Total height [mm]	970	1040	1230	1270
Brake	foot oper.	foot oper.	foot oper.	foot oper.
Folded stroller length [mm]	1160	1180	1200	1200
Folded stroller width [mm]	340	340	370	400
Folded stroller height [mm]	350	370	360	360

CORZINO Basic

Semi adjustable budget rehab buggy



Basic



- entry Budget buggy
- two-piece plastic Footrest
- backrest Extension (on 38 and 42)
- high Load Capacity (up to 75 kg)

specification

Standard equipment:

- footrest height adjustable and foldable
- backrest angle adjustable (2 positions)
- 5-point immo. harness with crotch belt and shoulder padding
- backrest height extension (size 38, 42 only)
- 175/265 mm big solid wheels
- cover patterns and frame colors according to current offer

order codes

Products	
CORZINO Basic 30	CNB30RP02
CORZINO Basic 34	CNB34RP02
CORZINO Basic 38	CNB38RP02
CORZINO Basic 42	CNB42RP02



	CNB30	CNB34	CNB38	CNB42
Seat width [mm]	300	340	380	420
Seat depth [mm]	280	330	380	380
Backrest height [mm]	550	650	650 (820)	660 (830)
Seat to footplate [mm]	290-420	300-440	300-440	330-490
Seat angle	22°/21°	23°/22°	22°/21°	23°/22°
Backrest angle	91° - 93°	91° - 94°	90° - 93°	90° - 93°
Weight	12,5 kg	12,6 kg	14,5 kg	15,5 kg
Maximum load	45,0 kg	55,0 kg	75,0 kg	75,0 kg
Total length [mm]	980	980	1050	1050
Total width [mm]	530	590	620	650
Total height [mm]	970	1040	1230	1270
Brake	foot oper.	foot oper.	foot oper.	foot oper.
Folded stroller length [mm]	1160	1180	1200	1200
Folded stroller width [mm]	340	340	370	400
Folded stroller height [mm]	350	370	360	360



do you want to know more?

www.patron.eu



PIPER Comfort

Hybrid semi adjustable standard rehab-buggy

PIPER



- Robust modern buggy
- Versatile buggy for daily activities
- Unique backrest recline
- Lightweight aluminium frame
- Comfortable& durable
- Super compact foldable design
- Load capacity up to 50kg

PIPER PIPER

PIPER Comfort is the new state of the art comfort rehab-buggy. This buggy is determined for short stay usage of children with special needs. The Piper Comfort features a unique backrest recline system with the adjustable calf rest allowing the user almost lie flat. With a range of postural positioning options, Piper is both supportive and comfortable resulting in reduced fatigue and safety for your child. Piper with its fully foldable undercarriage, robust but lightweight and compact aluminium frame, 5-point harness in standard, large adjustable footrest make it a versatile buggy for daily activities. Piper is available in one adaptable size. The variability of this buggy and the ability to attach a wide range of accessories allows the user's varying needs to be safely catered for.

Features



adjustable calf rest

backrest recline adjustable



large Footrest height adjustable



canopy with extension





one piece foldable handle

seat inlay

footplate booster



seat width adjustable by FLEXI-pads set

The seat to footrest length can be adjusted and by using an optional additional seat size-reduction inlay and footplate booster the buggy can be adjusted to fit the child's changing size from a child of approximately two up to a maximum load of 50kg's.



front wheels with direction lock



super compact foldable design

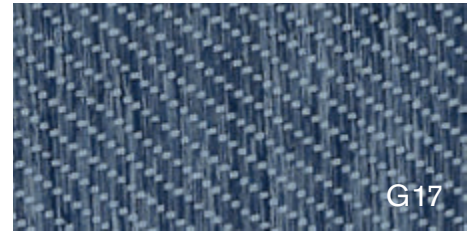
sizes and patterns

size
1+

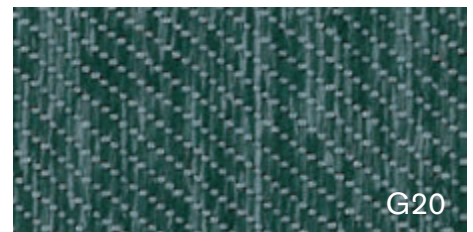


UNI

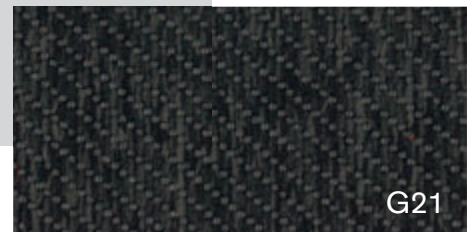
seat size-reduction
with inlay and
footplate booster



Denim blue




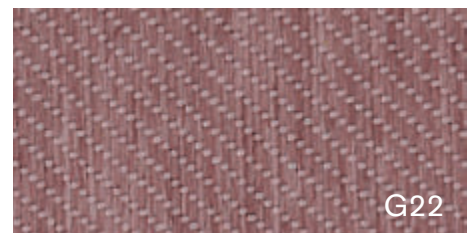
Teal green




Grey-black

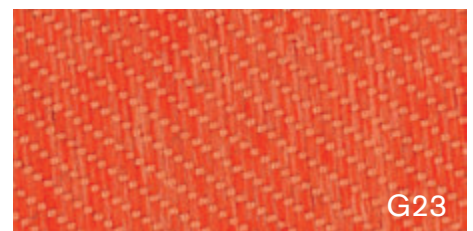
indicative size guide

	height of the user	
	with inserts	UNI
	85 - 110 cm	95 - 130 cm



Antique pink

	maximum user weight	
	with inserts	UNI
	50,0 kg	50,0 kg



Papaya orange

colour range



Denim blue



Teal green



Grey black



Antique pink



Papaya orange

specification

Standard equipment:

- seat depth non-adjustable
- extended backrest height non-adjustable
- backrest recline adjustable
- footrest height adjustable, detachable
- seat width adjustable by FLEXI-pads set (optional eq.)
- 5-point immo.harness with crotch belt and shoulder padding
- 175/225 mm solid wheels, front with swivel lock
- detachable wheels, forks
- one-piece foldable handle
- basket, transportation lock
- frame colours and cover patterns according to the current offer

The product had been successfully crash tested and fulfilled all the requirements of EN ISO 7176/19.

It enables to use the rehab-buggy not only for a common duty, but as well as for the transportation in specially adjusted motor vehicles, equipped with the anchoring points and equipment.

order codes

Products	
PIPER Comfort:	PIF34RP01

accessories



Canopy CLASSIC



Headrest adjustable



Abduction Block



Footplate booster

.... and
much more
accessories!

according to the actual list

	with Seat inlay / footrest raiser	UNI
Seat width [mm]	230/270	260/step/340
Seat depth [mm]	240	290
Backrest height [mm]	680	680
Seat to footplate [mm]	200-230	240-370
Seat angle	+25°	+25°
Backrest angle		90° - 125°
Weight		14,5 kg
Maximum load		50,0 kg
Total length [mm]		1080
Total width [mm]		590
Total height [mm]		1000
Brake		foot oper.
Folded stroller length [mm]		1020
Folded stroller width [mm]		330
Folded stroller height [mm]		280

REHAB-STROLLERS

Fully adjustable

- **TOM 5**
 - **TOM 4**
-

Semi adjustable

- **JACKO**
 - **BEN**
-

Hybrid solutions

- **DIXIE**
-



TOM 5

Fully adjustable comfort rehab-stroller



- ALUX high-tech chassis
- Unique MONOSLIDE design
- Modern and innovative
- Compact and Comprehensive
- 3 and half sizes MINI, STANDARD, MAXI and MAXI-XLG



variants

Xcountry
Streeter
Clipper

TOM 5

High-Tech line of lightweight and compact aluminium rehab strollers available in versions Xcountry, Streeter and Clipper that will fit easily into family life. TOM5 is a very versatile stroller with postural support by fully positionable and adjustable seat unit with extensions operating on an innovative Monoslide system that is strong and secure. Seat unit is detachable and reversible and covered by fully detachable soft padded upholstery in fashionable design. Fully foldable chassis even with the attached seat on includes among others well designed chassis to seat interface, safe brake system, spring cushioned shock absorber and ergonomically shaped handlebar with the height adjustment. Tom 5 has been designed with professional designers and seating specialist and it's design redefines the stroller appearance and gives us a new version of 'normal'.

Seating and Positioning



Growth Capabilities

height adjustable
backrest



depth adjustable of
the seat base



width adjustable of
the seat base



height adjustable
foorest



sizes and patterns

sizes
3+

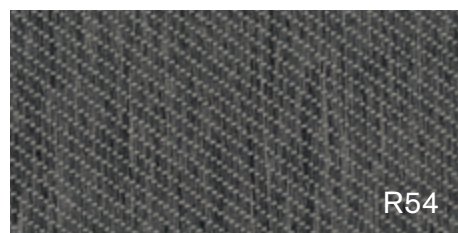


MAXI-XLG

MAXI

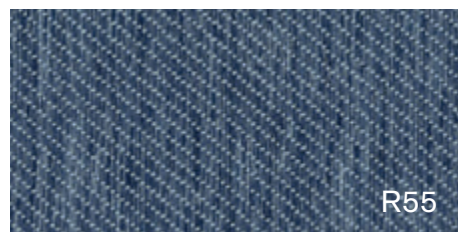
STD

MINI



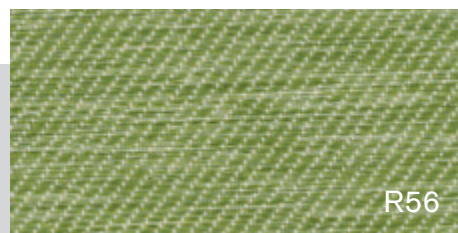
R54

Slate grey



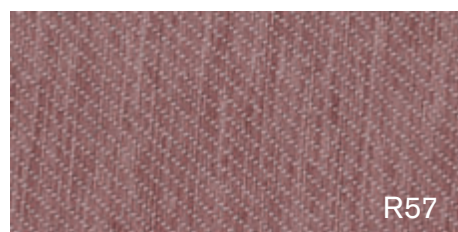
R55

Denim blue



R56


Pea green



R57

Antik pink


indicative size guide

	height of the user			
	MINI	STD	MAXI	MAXI XLG
	75 - 110 cm	85 - 135 cm	90 - 150 cm	110 - 165 cm



R58

Papaya orange

	maximum user weight			
	MINI	STD	MAXI	MAXI XLG
	40,0 kg	40,0 kg	50,0 kg	50,0 kg



R59

Ruby red

colour range



Slate grey



Denim blue



Pea green



Antik pink



Papaya orange



Ruby red

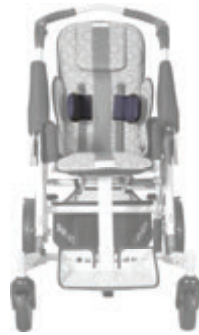
accessories



Headrest COMFORT



Neckrest COMFORT



Side trunkrest CLASSIC



Basket-HD (steel)



Calf rest COMFORT



4-point immo. belt COMFORT



Abduction block



Immo. Waistcoat COMFORT



Padded frame cover with side protection



Pelvis fixation



Canopy CLASSIC



Canopy COMFORT with rain cover



High-low indoor frame CLASSIC



Work board CLASSIC

.... and much more accessories!

according to the actual list

Tom 5 has been crash tested and fulfilled all the requirements of EN ISO 7176/19

It enables to use the rehab-buggy not only for a common duty, but as well as for the transportation in specially adjusted motor vehicles, equipped with the anchoring points and equipment.



TOM 5 Xcountry

Fully adjustable cross-country rehab-stroller



Xcountry



- BIG cross-country wheels for outdoor adventure
- lightweight aluminium frame
- multi-positioning and adjustable seat
- comfortable and secure
- shock Absorber against front impact
- compact folding

specification

Standard equipment:

- detachable and reversible seat-unit
- height adjustable backrest
- depth and width adjustment of the seat-base.
- seat-unit with fully adjustable tilt-in-space function
- fully reclining backrest with lateral supports
- angle and height adjustable footrest
- angle adjustable footplate
- 200/400 mm solid wheels
- detachable grab bar with cover
- height adjustable ergonomic handlebar
- upholstery with reflexive safety marks
- basket, hip rest, padded frame cover
- frame colors and fabric patterns according to the current offer

order codes

Products	
TOM 5 Xcountry MINI:	T5X30RP00
TOM 5 Xcountry STD:	T5X34RP00
TOM 5 Xcountry MAXI:	T5X38RP00
TOM 5 Xcountry MAXI-XLG:	T5X38RP0G



folded stroller



	MINI	STD	MAXI	MAXI-XLG
Seat width [mm]	230-300	250-340	270-380	270-380
Seat depth [mm]	(185) 200-270	230-330	290-400	340-450
Backrest height [mm]	450-570	510-680	550-710	610-790
Seat to footplate [mm]	120-280	120-360	120-390	120-430
Seat angle	+46°/(-30°)	+38°/(-32°)	+43°/(-33°)	+43°/+10°
Backrest angle	91° - 165°	90° - 180°	90° - 180°	90° - 180°
Weight	19,4 kg	21,0 kg	22,0 kg	23,5 kg
Maximum load	40,0 kg	40,0 kg	50,0 kg	50,0 kg
Total length [mm]	840	840	840	840
Total width [mm]	595	630	670	675
Total height [mm]	1000	1000	1070	1100
Brake	foot oper.	foot oper.	foot oper.	foot oper.
Folded stroller length [mm]	840	850	880	930
Folded stroller width [mm]	595	630	670	670
Folded stroller height [mm]	440	450	470	470

TOM 5 Streeeter

Fully adjustable comfort rehab-stroller



Streeeter



- outdoor adventure with Streeeter wheels
- lightweight aluminium frame
- multi-positioning and adjustable seat
- comfortable and secure
- shock Absorber against front impact
- compact folding

specification

Standard equipment:

- detachable and reversible seat-unit
- height adjustable backrest
- depth and width adjustment of the seat-base.
- seat-unit with fully adjustable tilt-in-space function
- fully reclining backrest with lateral supports
- angle and height adjustable footrest
- angle adjustable footplate
- 175/265 mm solid wheels
- detachable grab bar with cover
- height adjustable ergonomic handlebar
- upholstery with reflexive safety marks
- basket, hip rest, padded frame cover

order codes

Products	
TOM 5 Streeeter MINI:	T5S30RP00
TOM 5 Streeeter STD:	T5S34RP00
TOM 5 Streeeter MAXI:	T5S38RP00
TOM 5 Streeeter MAXI-XLG:	T5S38RP0G



	MINI	STD	MAXI	MAXI-XLG
Seat width [mm]	230-300	250-340	270-380	270-380
Seat depth [mm]	(185) 200-270	230-330	290-400	340-450
Backrest height [mm]	450-570	510-680	550-710	610-790
Seat to footplate [mm]	120-280	120-360	120-390	120-430
Seat angle	+46°/(-30°)	+38°/(-32°)	+43°/(-33°)	+43°/+10°
Backrest angle	91° - 165°	90° - 180°	90° - 180°	90° - 180°
Weight	18,4 kg	20,0 kg	21,0 kg	22,5 kg
Maximum load	40,0 kg	40,0 kg	50,0 kg	50,0 kg
Total length [mm]	760	760	760	760
Total width [mm]	595	630	670	670
Total height [mm]	1000	1000	1070	1100
Brake	foot oper.	foot oper.	foot oper.	foot oper.
Folded stroller length [mm]	840	850	880	930
Folded stroller width [mm]	595	630	670	670
Folded stroller height [mm]	360	370	390	440

TOM 5 Clipper

Fully adjustable standard rehab-stroller



Clipper



- simpler and more economical option
- lightweight frame
- multi-positioning and adjustable seat
- comfortable and secure
- compact folding
- easy to operate

specification

Standard equipment:

- detachable and reversible seat-unit
- height adjustable backrest
- depth and width adjustment of the seat-base.
- seat-unit with fully adjustable tilt-in-space function
- fully reclining backrest with lateral supports
- angle and height adjustable footrest
- angle adjustable footplate
- 175/265 mm solid wheels
- detachable grab bar with cover
- height adjustable ergonomic handlebar
- upholstery with reflexive safety marks
- basket, hip rest, padded frame cover

order codes



Products	
TOM 5 Clipper MINI:	T5C30RP00
TOM 5 Clipper STD:	T5C34RP00
TOM 5 Clipper MAXI:	T5C38RP00



	MINI	STD	MAXI
Seat width [mm]	200/step/300	240/step/340	280/step/380
Seat depth [mm]	190-240	230-340	280-390
Backrest height [mm]	440-570	530-680	540-700
Seat to footplate [mm]	155-290	160-370	160-410
Seat angle	+37°/(-31°)	+38°/(-38°)	+38°/(-38°)
Backrest angle	90° - 170°	90° - 180°	90° - 170°
Weight	19,0 kg	21,0 kg	22,5 kg
Maximum load	40,0 kg	40,0 kg	50,0 kg
Total length [mm]	880	860	880
Total width [mm]	595	635	675
Total height [mm]	1000	1000	1070
Brake	foot oper.	foot oper.	foot oper.
Folded stroller length [mm]	880	860	880
Folded stroller width [mm]	590	630	670
Folded stroller height [mm]	400	450	450



do you want to know more?

www.patron.eu



TOM 4

Fully adjustable budget rehab-stroller



- Tilt-in-space postural stroller
- Lightweight steel frame
- Reliable and durable
- 4 sizes MINI, STANDARD, MAXI, SuperMAXI (up to 75kg)



variants

Xcountry
Classic

TOM 4

TOM 4 an entry level tilt-in-space postural stroller with a durable steel frame giving a more economic solution. The multi-position Seat Unit with its full range postural accessories along with the ability to carry equipment, the Tom 4 becomes reliable and durable companion for everyday use. The seat-unit offers growth on all 4 available sizes, is detachable, reversible and covered by fully detachable soft padded textile upholstery in fashionable design. Easy handling for transport is ensured by the fully foldable frame of the stroller even with the attached seat. The Tom 4 can be suitable for occupied transport in a vehicle too.

Seating and Positioning



Growth Capabilities



backrest height

seat width (Flexi-pads set)



footrest height



seat depth



folded stroller



central operated brake

sizes and patterns

4 sizes

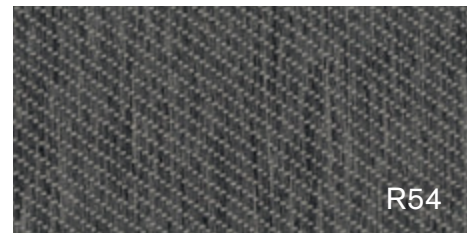


SM42

MAXI

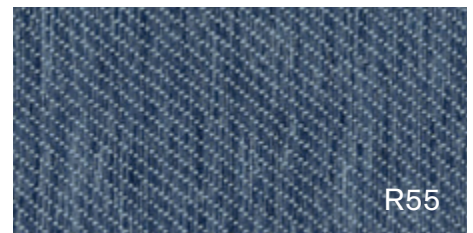
STD

MINI



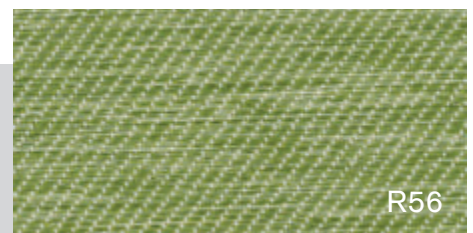
R54

Slate grey



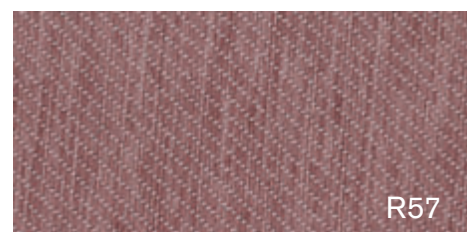
R55

Denim blue



R56

Pea green



R57

Antik pink



R58


Papaya orange




R59

Ruby red

indicative size guide

	height of the user			
	MINI	STD	MAXI	SM42
	75 - 110 cm	95 - 130 cm	105 - 150 cm	105 - 150 cm

	maximum user weight			
	MINI	STD	MAXI	SM42
kg	40,0 kg	40,0 kg	50,0 kg	75,0 kg

colour range



Slate grey



Denim blue



Pea green



Antik pink



Papaya orange



Ruby red

accessories



Canopy CLASSIC



Basket (textile)



Work board BASIC - UNI



FLEXI-pads set



Rain cover



Headrest CLASSIC



Side trunkrest CLASSIC



4-point immobilisation belt CLASSIC



Hip rest CLASSIC



Abduction block CLASSIC



Immo. Waistcoat CLASSIC



H-style harness CLASSIC



Pelvis fixation



Feet fixation - pair

... and
much more
accessories!

according to the actual list

Tom 4 has been crash tested and fulfilled all the requirements of EN ISO 7176/19

It enables to use the rehab-buggy not only for a common duty, but as well as for the transportation in specially adjusted motor vehicles, equipped with the anchoring points and equipment.



TOM 4 Xcountry

Fully adjustable cross-country budget rehab-stroller



Xcountry



- BIG cross-country wheels for outdoor adventure
- multi-position seat unit
- reversable seat with tilt-in-space
- growth Capabilities

specification

Standard equipment:

- detachable and reversible seat-unit
- height adjustable backrest and depth adjustment of the seat-base.
- width adjustable seat by FlexiPads set (optional equipment)
- seat with fully adjustable tilt in space function
- fully reclining backrest
- angle and height adjustable footrest
- 200/400 solid wheels
- detachable soft side-cushions
- detachable grab bar with cover
- frame colour and fabric patterns according to the current offer

order codes

Products	
TOM 4 Xcountry MINI:	T4X30RP00
TOM 4 Xcountry STD:	T4X34RP00
TOM 4 Xcountry MAXI:	T4X38RP00
TOM 4 Xcountry SM42	T4X42RP00



	MINI	STD	MAXI	SM42
Seat width [mm]	200/step/300	240/step/340	280/step/380	320/step/420
Seat depth [mm]	200-270	275-310	320-430	320-430
Backrest height [mm]	450-600	520-680	580-680	580-680
Seat to footplate [mm]	145-290	195-335	230-385	230-385
Seat angle	+22°/(-22°)	+22°/(-22°)	+22°/(-22°)	+22°/(-22°)
Backrest angle	90° - 165°	90° - 165°	90° - 165°	90° - 165°
Weight	18,5 kg	19,5 kg	21,0 kg	23,0 kg
Maximum load	40,0 kg	40,0 kg	50,0 kg	75,0 kg
Total length [mm]	860	860	860	860
Total width [mm]	580	580	620	670
Total height [mm]	1000	1000	1070	1070
Brake	foot oper.	foot oper.	foot oper.	foot oper.
Folded stroller length [mm]	1000	1000	1000	1000
Folded stroller width [mm]	580	580	620	670
Folded stroller height [mm]	490	510	510	530

TOM 4 Classic

Fully adjustable budget rehab-stroller



Classic



- multi-position seat unit
- reversable seat with tilt-in-space
- growth Capabilities
- easy to operate

specification

Standard equipment:

- detachable and reversible seat-unit
- height adjustable backrest and depth adjustment of the seat-base.
- width adjustable seat by FlexiPads set (optional equipment)
- seat with fully adjustable tilt in space function
- fully reclining backrest
- angle and height adjustable footrest
- 175/265 solid wheels
- detachable soft side-cushions
- detachable grab bar with cover
- frame colour and fabric patterns according to the current offer

order codes

Products	
TOM 4 Classic MINI:	T4C30RP00
TOM 4 Classic STD:	T4C34RP00
TOM 4 Classic MAXI:	T4C38RP00
TOM 4 Classic SM42	T4C42RP00



	MINI	STD	MAXI	SM42
Seat width [mm]	200/step/300	240/step/340	280/step/380	320/step/420
Seat depth [mm]	200-270	275-310	320-430	320-430
Backrest height [mm]	450-600	520-680	580-680	580-680
Seat to footplate [mm]	145-290	195-335	230-385	230-385
Seat angle	+22°/(-22°)	+22°/(-22°)	+22°/(-22°)	+22°/(-22°)
Backrest angle	90° - 160°	90° - 160°	90° - 165°	90° - 165°
Weight	17,5 kg	18,5 kg	20,0 kg	22,0 kg
Maximum load	40,0 kg	40,0 kg	50,0 kg	75,0 kg
Total length [mm]	860	860	860	860
Total width [mm]	580	580	620	670
Total height [mm]	1000	1000	1070	1070
Brake	foot oper.	foot oper.	foot oper.	foot oper.
Folded stroller length [mm]	1000	1000	1000	1000
Folded stroller width [mm]	580	580	620	670
Folded stroller height [mm]	430	450	450	470



do you want to know more?

www.patron.eu



JACKO

Semi adjustable rehab-stroller

JACKO



- Ideal stroller for children with mild postural needs
- ALUX high-tech chassis
- 2 sizes- STD, MAXI



variants

Xcountry
Streeter
Clipper

Jacko is designed to provide moderate support. The seat reclines to lie flat, making the Jacko an ideal solution for children with mild postural needs, but require a comfortable position to recover from a seizure. Innovative lightweight aluminium chassis, accentuating the simplicity in usage and modern pure design. Comfort seating with adjustable seat depth and optionally with seat width is ensured by fully detachable soft padded textile upholstery in fashion style. The rigid seat back promotes better posture, with a low level of additional support able to be fitted. Jacko folds as one to the very compact size and reach excellent rate of the width between seat and chassis, what also makes possible for size STD to get through of entrance 600 mm. Jacko is available in two sizes and it is determined not only for standard usage but optionally also for the light outdoor activities.

Seating and Positioning





seat width by
Flexi-pads set



angle adjustable
handlebar



height adjustable
footplate



folds as one

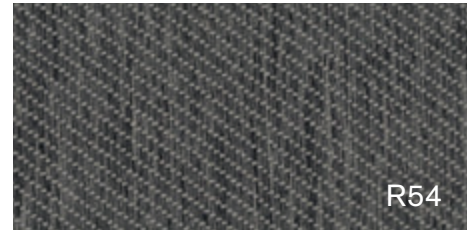
sizes and patterns

2 sizes



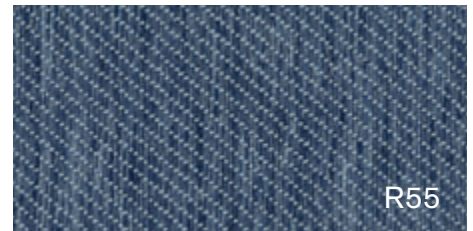
MAXI

STD



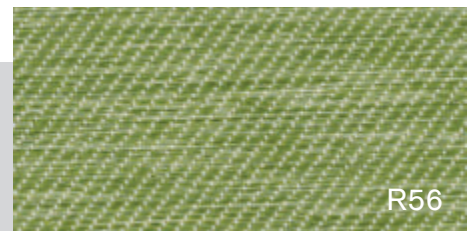
R54

Slate grey



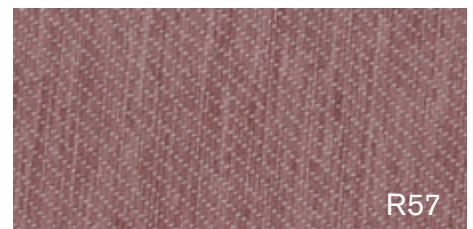
R55

Denim blue



R56


Pea green



R57

Antik pink


indicative size guide

	height of the user	
	STD	MAXI
	100 - 130 cm	110 - 150 cm



R58

Papaya orange

	maximum user weight	
	STD	MAXI
	40,0 kg	50,0 kg



R59

Ruby red

colour range



Slate grey



Denim blue



Pea green



Antik pink

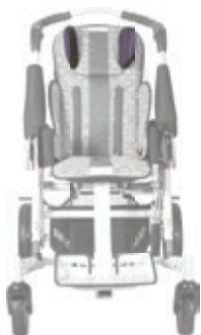


Papaya orange



Ruby red

accessories



Headrest COMFORT



Calf rest



Bag



Feet fixation - pair



Lumbar support



Padded frame covers



Basket



Sun shade



5-point immobilization belt



Abduction block



Side trunkrest CLASSIC



H-style harness BASIC



Rain cover JACKO



Footmuff - Summer

.... and
much more
accessories!

according to the actual list

JACKO Xcountry

Semi adjustable cross-country rehab-stroller



Xcountry



- BIG cross-country wheels for outdoor adventure
- lightweight aluminium frame
- folds as one
- seat reclines to lie flat

specification

Standard equipment:

- fully reclining backrest
- angle and height adjustable footrest
- angle adjustable footplate
- 200/400 mm solid wheels
- detachable grab bar with cover
- height adjustable ergonomic handlebar
- reflexive safety marks
- seat depth adjustment
- seat width adjustable by FLEXI-pads set (optional equipment)
- basket, padded frame covers
- frame colours and fabric patterns according to the current offer.

order codes

Products	
JACKO Xcountry STD:	J5X34RP00
JACKO Xcountry MAXI:	J5X38RP00



	STD	MAXI
Seat width [mm]	240/step/340	280/step/380
Seat depth [mm]	290-340	330-380
Backrest height [mm]	620	750
Seat to footplate [mm]	230-360	230-390
Seat angle	+15°	+15°
Backrest angle	90° - 160°	90° - 160°
Weight	19,0 kg	20,5 kg
Maximum load	40,0 kg	50,0 kg
Total length [mm]	840	840
Total width [mm]	590	630
Total height [mm]	1070	1150
Brake	foot oper.	foot oper.
Folded stroller length [mm]	880	940
Folded stroller width [mm]	590	630
Folded stroller height [mm]	440	440

JACKO Streeter

Semi adjustable comfort rehab-stroller



Streeter



- lightweight aluminium frame
- folds as one
- seat reclines to lie flat
- easy to operate stroller

specification

Standard equipment:

- fully reclining backrest
- angle and height adjustable footrest
- angle adjustable footplate
- 175/265 mm solid wheels
- detachable grab bar with cover
- height adjustable ergonomic handlebar
- reflexive safety marks
- seat depth adjustment
- seat width adjustable by FLEXI-pads set (optional equipment)
- basket, padded frame covers
- frame colours and fabric patterns according to the current offer.

order codes

Products	
JACKO Streeater STD:	J5S34RP00
JACKO Streeater MAXI:	J5S38RP00



	STD	MAXI
Seat width [mm]	240/step/340	280/step/380
Seat depth [mm]	290-340	330-380
Backrest height [mm]	620	750
Seat to footplate [mm]	230-360	230-390
Seat angle	+15°	+15°
Backrest angle	90° - 160°	90° - 160°
Weight	18,0 kg	19,5 kg
Maximum load	40,0 kg	50,0 kg
Total length [mm]	770	770
Total width [mm]	590	630
Total height [mm]	1070	1150
Brake	foot oper.	foot oper.
Folded stroller length [mm]	880	940
Folded stroller width [mm]	590	630
Folded stroller height [mm]	360	360

JACKO Clipper

Semi adjustable standard rehab-stroller



Clipper



- lightweight aluminium frame
- folds as one
- seat reclines to lie flat
- simpler equipped

specification

Standard equipment:

- fully reclining backrest
- angle and height adjustable footrest
- angle adjustable footplate
- 175/265 mm solid wheels
- detachable grab bar with cover
- height adjustable ergonomic handlebar
- reflexive safety marks
- seat depth adjustment
- seat width adjustable by FLEXI-pads set (optional equipment)
- frame colours and fabric patterns according to the current offer.

order codes

Products	
JACKO Clipper STD:	J5C34RP00
JACKO Clipper MAXI:	J5C38RP00



	STD	MAXI
Seat width [mm]	240/step/340	280/step/380
Seat depth [mm]	290-340	330-380
Backrest height [mm]	620	750
Seat to footplate [mm]	270-350	270-370
Seat angle	+15°	+15°
Backrest angle	90° - 160°	90° - 160°
Weight	18,0 kg	19,5 kg
Maximum load	40,0 kg	50,0 kg
Total length [mm]	770	770
Total width [mm]	590	630
Total height [mm]	1070	1150
Brake	foot oper.	foot oper.
Folded stroller length [mm]	880	940
Folded stroller width [mm]	590	630
Folded stroller height [mm]	360	360



do you want to know more?

www.patron.eu



BEN

Semi adjustable budget rehab-stroller



- Budget solution for children with mild postural needs
- 5 sizes MINI, STD, MAXI, SUPER MAXI 42 and 45 (up to 75 kg)



variants

**Xcountry
Plus**

Robust simpler mobility solution for children with mild postural needs. Durable undercarriage with ergonomically shaped handle along with 5 seat-sizes (MINI, Standard, MAXI, SuperMaxi 42 and 45) are the base for the standard line of rehab strollers. Undercarriage is reinforced and optimized for heavy duty usage. The seat reclines to lie flat with the fully angle and height adjustable footrest, can be adjusted to three angle positions and is covered by fully detachable soft padded upholstery. Easy handling is ensured by the stroller's fully and very compact foldable frame.

Seating and Positioning



height adjustable
footplate



angle adjustable
handlebar



folds as one

sizes and patterns

5 sizes



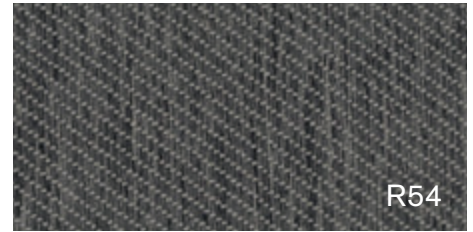
SM45

SM42

MAXI

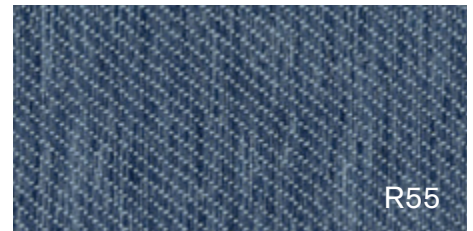
STD

MINI



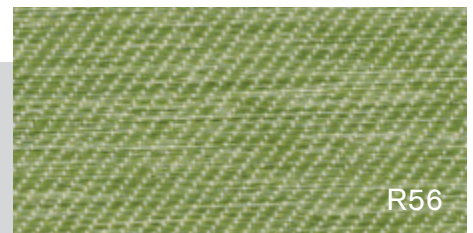
R54

Slate grey



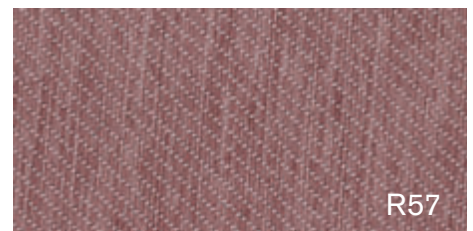
R55

Denim blue



R56

Pea green



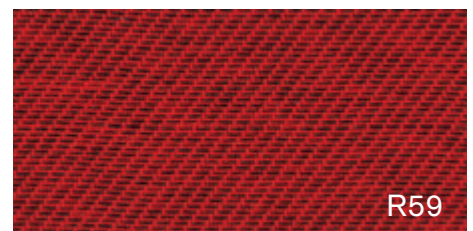
R57

Antik pink



R58

Papaya orange




R59


Ruby red

indicative size guide

height of the user

	MINI	STD	MAXI	SM42	SM45
	85-105 cm	100-125 cm	110-145 cm	110-145 cm	120-165 cm

maximum user weight

	MINI	STD	MAXI	SM42	SM45
	40,0 kg	40,0 kg	50,0 kg	75,0 kg	75,0 kg

colour range



Slate grey



Denim blue



Pea green



Antik pink



Papaya orange



Ruby red

accessories

Optional equipment:

- canopy, rain cover
- headrest, 4-point immo.belt, abduction block
- work board
- basket
- and other equipment according to the actual list



BEN Xcountry

Semi adjustable cross-country budget rehab-stroller



Xcountry



- BIG cross-country wheels for outdoor adventure
- Available only in size SuperMaxi 42 and 45
- reclines to lie flat
- lightweight steel frame
- moderate support

specification

Standard equipment:

- non size-adjustable seat with fully detachable soft padded textile upholstery
- fully reclining backrest
- seat with tilt-in space function (3 positions)
- height variations for attaching of the fixation devices and accessories
- angle and height adjustable footrest
- 200/400 mm wheels
- detachable grab bar with cover
- frame color and fabric patterns according to the current offer
- height adjustable ergonomic handlebar

order codes

Products	
BEN Xcountry SuperMaxi 42:	B4X42RP00
BEN Xcountry SuperMaxi 45:	B4X45RP00



	SM42	SM45
Seat width [mm]	320/step/420	350/step/450
Seat depth [mm]	370	460
Backrest height [mm]	710	840
Seat to footplate [mm]	230-400	240-460
Seat angle	+18°/step/+27°	+20°/step/+30°
Backrest angle	90° - 155°	90° - 155°
Weight	21,0 kg	27,0 kg
Maximum load	75,0 kg	75,0 kg
Total length [mm]	860	940
Total width [mm]	670	690
Total height [mm]	1130	1250
Brake	foot oper.	foot oper.
Folded stroller length [mm]	1000	1100
Folded stroller width [mm]	670	700
Folded stroller height [mm]	460	530

BEN Plus

Semi adjustable budget rehab-stroller



Plus



- reclines to lie flat
- lightweight steel frame
- 5 sizes
- moderate support

specification

Standard equipment:

- non size-adjustable seat with fully detachable soft padded textile upholstery
- fully reclining backrest
- seat with tilt-in space function (3 positions)
- height variations for attaching of the fixation devices and accessories
- angle and height adjustable footrest
- 175/265 mm wheels
- detachable grab bar with cover
- frame color and fabric patterns according to the current offer
- height adjustable ergonomic handlebar

order codes

Products	
BEN Plus MINI:	B4P30RP00
BEN Plus STD:	B4P34RP00
BEN Plus MAXI:	B4P38RP00
BEN Plus SuperMaxi 42:	B4P42RP00
BEN Plus SuperMaxi 45:	B4P45RP00



	MINI	STD	MAXI	SM42	SM45
Seat width [mm]	200/step/300	240/step/340	280/step/380	320/step/420	350/step/450
Seat depth [mm]	220	290	370	370	460
Backrest height [mm]	540	640	710	710	840
Seat to footplate [mm]	140-280	200-330	230-400	230-400	240-460
Seat angle	+19/step/+27°	+20/step/+28°	+19/step/+27°	+18/step/+27°	+20/step/+30°
Backrest angle	90° - 160°	90° - 160°	90° - 155°	90° - 155°	90° - 155°
Weight	15,3 kg	16,0 kg	17,0 kg	21,0 kg	27,0 kg
Maximum load	40,0 kg	40,0 kg	50,0 kg	75,0 kg	75,0 kg
Total length [mm]	860	860	860	860	940
Total width [mm]	580	580	620	670	695
Total height [mm]	950	1050	1130	1110	1250
Brake	foot oper.	foot oper.	foot oper.	foot oper.	foot oper.
Folded stroller length [mm]	1000	1000	1000	1000	1100
Folded stroller width [mm]	580	580	620	670	695
Folded stroller height [mm]	400	400	400	410	480

DIXIE Plus

Hybrid semi adjustable standard rehab-stroller



determined for smaller children with mild postural needs
clip-A-go interface
reversible and reclining seat

Facelifted rehab-stroller DIXIE is based on new lightweight aluminium chassis produced by ALUX production technology. New genuine "clip-A-go" modular seat/chassis interface offers you great flexibility and easy manipulation. Seating comfort on non-size adjustable seat is ensured by fully detachable soft padded textile upholstery in fashionable style as well as by fully reclining backrest and angle and height adjustable footrest. The design of the stroller enabling folding to compact size as well as to reach excellent rate of the width between seat and chassis, what also makes possible to get through 600 mm only wide entrance. DIXIE is available in one universal sizes and it is designated not only for city usage but due to 200/265 mm solid wheels and spring suspension chassis also for the light outdoor activities. Product is determined for smaller children with mild postural needs.

Seating and Positioning



sizes and patterns

1 size



UNI



R47

Pea green



R49

Levander blue

colour range



Pea green



Levander blue

accessories

Standard equipment:

- reversible seat unit with "clip-A-go" interface
- fully reclining backrest
- width adjustable seat by FLEXI-pads set (optional equipment)
- angle and height adjustable footrest
- chassis with suspension
- 200/265 mm solid wheels

Optional equipment:

- detachable grab bar with cover
 - height adjustable ergonomic handlebar
 - 5-point immo.harness with crotch belt and shoulder padding
 - abduction block, headwings
 - basket
 - frame colours and fabric patterns according to the current offer
- rain cover, summer and winter footmuff and other equipment according to the actual list.

Products

DIXIE Plus:

D4PWKPYYY



quick compact folding

	UNI
Backrest height [mm]	530
Seat depth [mm]	280
Seat width [mm]	230/step/340
Seat to footplate [mm]	200-300
Backrest angle	115° - 170°
Seat angle	5°
Total length [mm]	830
Total width [mm]	595
Total height /with adj.handle [mm]	910/1080
Brake	foot oper.
Weight	15,0 kg
Maximum load	30,0 kg
Folded stroller length [mm]	1200
Folded stroller width [mm]	595
Folded stroller height [mm]	390

SEATING AND POSITIONING SEATING AND POSITIONING POSTURAL PRODUCTS

Fully adjustable

- **FROGGO**

- **TAMPA**



FROGGO Comfort

Multipurpose fully adjustable comfort seating system

FROGGO



Highly innovative
MONOSLIDE seat design
gas-spring fully adjustable high-low base
3+ sizes

FROGGO is highly innovative seating system for children with special needs, which require full positioning features as well as body support and stabilization in sitting for everyday activities (at home , at school, at rehabilitation centres ,). FROGGO seat is manufactured in 3+ sizes. Full aluminium ALUX seat-unit is fully size adjustable, as well as fully position adjustable. Highly innovative seat MONOSLIDE design offers well approved flexible system for attaching and anchoring of fixation devices and positioning accessories (great variety of professional accessory available upon request). Seat shell is covered by fully detachable soft padded textile upholstery.

Seating and Positioning

footrest and backrest recline



high-low adjustable



tilt-in-space



Growth Capabilities



sizes and patterns

3+ sizes

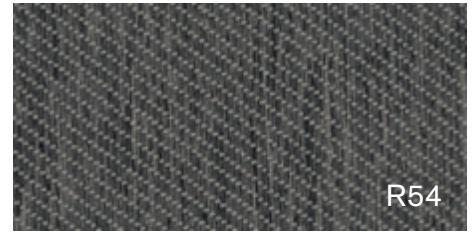


MAXI-XLG

MAXI

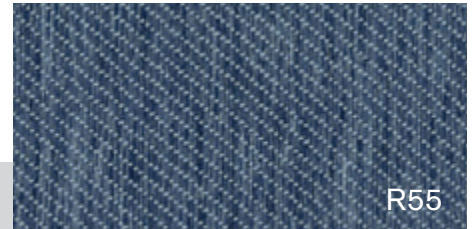
STD

MINI



R54

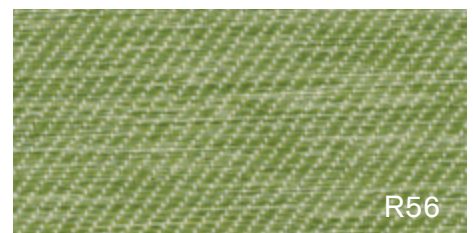
Slate grey



R55


Denim blue


indicative size guide

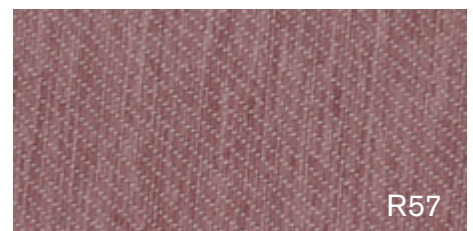


R56

Pea green

	height of the user			
	MINI	STD	MAXI	MAXI XLG
	75 - 110 cm	85- 135 cm	90 - 150 cm	110 - 165 cm

	maximum user weight			
	MINI	STD	MAXI	MAXI XLG
kg	40,0 kg	40,0 kg	50,0 kg	50,0 kg



R57

Antik pink

colour range



Slate grey



Denim blue



Pea green



Antik pink

accessories

Standard equipment:

- height adjustable backrest, depth and width adjustment of the seat-base.
- detachable, height, position and angle adjustable armrests
- seat-unit with fully adjustable tilt-in-space function
- full backrest recline with lateral supports
- angle and height adjustable footrest, angle adjustable footplate
- telescopic gas-spring high-low adjustment function
- front and rear castor wheels with brakes
- detachable seat grab bar, chassis push handle
- cover patterns and frame colours according to current

Optional equipment:

- side trunk rest, 4-point immo.belt, abductor block

and much more of other equipment according to the actual list.

Products	
FROGGO Comfort MINI	FRF30AG00
FROGGO Comfort STD	FRF34AG00
FROGGO Comfort MAXI	FRF38AG00
FROGGO Comfort XLG-MAXI	FRF38AG0G

	MINI	STD	MAXI	MAXI-XLG
Seat width [mm]	230-300	250-340	270-380	270-380
Seat depth [mm]	(185) 200-270	230-330	290-400	340-450
Backrest height [mm]	450-570	510-680	550-770	610-790
Armrest height [mm]	160-210	200-270	200-270	200-270
Seat to footplate [mm]	120-280	120-360	120-390	120-430
Seat unit tilt-in-space	+42°/-3°	+40°/-5°	+41°/-4°	+41°/-4°
Backrest recline	90°-180°	90°-180°	90°-180°	90°-180°
Armrest angle adjustable	+15°/-15°	+15°/-15°	+15°/-15°	+15°/-15°
Footrest angle adjustable	90°-180°	90°-180°	90°-180°	90°-180°
Footplate angle adjustable	-9°/+14°	-9°/+14°	-9°/+14°	-9°/+14°
Total weight	16,2 kg	16,9 kg	18,0 kg	19,5 kg
Max load	40,0 kg	40,0 kg	50,0 kg	50,0 kg
Total length [mm]	800	800	800	800
Total width [mm]	500	500	540	540
Total height [mm]	1030	1120	1120	1200

TAMPA Classic

Fully adjustable standard seating system

TAMPA



fully adjustable seat unit
height adjustable base
4 sizes (up to 75 kg)

TAMPA

TAMPA Classic - position and size-adjustable seating system for children with special needs who require support and stabilization in sitting for everyday activities performed at school, at home or in a rehabilitation clinic. TAMPA Classic offering many points of adjustable support that allow the chair to be adapted to each child's individual needs, using wide accessory range. The base of the seating system provides stability and mobility with tilt-n-space adjustment and the seat with height adjustable armrest. TAMPA Classic is available in 4 sizes – MINI, STD, MAXI, SuperMAXI 42.

Seating and Positioning

footrest and backrest recline



high-low adjustable



tilt-in-space



Growth Capabilities



sizes and patterns

4 sizes

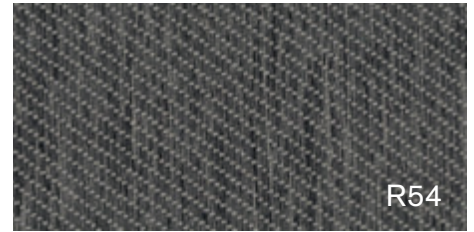


SM42

MAXI

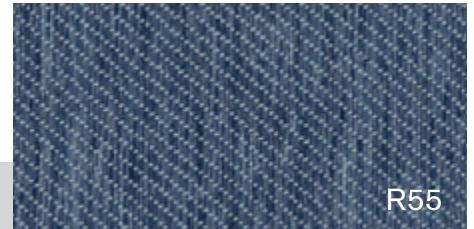
STD

MINI



R54

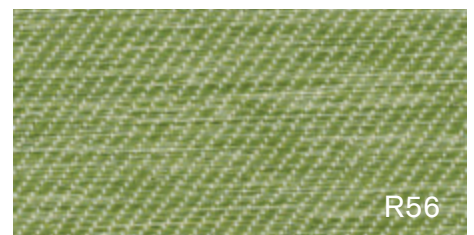
Slate grey



R55

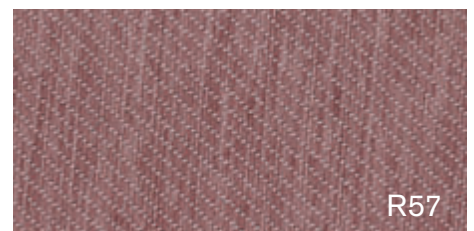
Denim blue

indicative size guide




R56


Pea green



R57

Antik pink

	height of the user			
	MINI	STD	MAXI	SM42
	75 - 110 cm	85 - 135 cm	90 - 150 cm	95 - 170 cm

	maximum user weight			
	MINI	STD	MAXI	SM42
	40,0 kg	40,0 kg	50,0 kg	75,0 kg

colour range



Slate grey



Denim blue



Pea green



Antik pink

accessories

Standard equipment:

- seat depth adjustment
- height adjustable backrest
- width adjustable seat by FlexiPads set (optional equipment)

Optional equipment:

- workboard
- FlexiPads set

- seat height and tilt in space function
- angle and height adjustable footrest
- height adjustable armrest
- rear castor wheels with brake
- telescopic wheeled base with length adjustment
- grab bar, armrest, push handle.

- side trunk rest, 4-point immo.belt, abduction block and much more of other equipment according to the actual list.

Products	
TAMPA Classic MINI	TMC30AM00
TAMPA Classic STD	TMC34AM00
TAMPA Classic MAXI	TMC38AM00
TAMPA Classic SuperMAXI 42	TMC42AM00

	MINI	STD	MAXI	MAXI-XLG
Seat width [mm]	200/step/300	240/step/340	280/step/380	320/step/420
Seat depth [mm]	200-270	275-310	320-430	320-430
Backrest height [mm]	450-600	520-680	580-680	580-680 (1070)
Armrest height [mm]	150-210	170-260	170-260	170-260
Seat to footplate [mm]	145-290	195-335	230-385	230-385
Seat unit tilt-in-space	+37°/-11°	+37°/-11°	+37°/-11°	+37°/-11°
Backrest recline	90°- 165°	90°- 165°	90°- 155°	90°- 135°
Footrest angle adjustable	90°-180°	90°-180°	90°-180°	90°-180°
Total weight	15,0 kg	15,5 kg	17,5 kg	19,5 kg
Max load	40,0 kg	40,0 kg	50,0 kg	75,0 kg
Total length [mm]	600	600	600	600
Total width [mm]	510	510	510	510
Total height [mm]	1050	1110	1140	1210

MODULAR CHASSIS

High-low modular chassis

- **DURANGO**
 - **DENVER**
 - **BRIX**
-

Modular stroller chassis - CSI-versions

- **TOM 5-CSI**
 - **TOM 4-CSI**
-



DURANGO / DENVER

High-low outdoor and indoor modular chassis



DENVER



Outdoor / indoor
Highly inovative modular chassis
gas-spring fully adjustable high-low base

DURANGO / DENVER

DURANGO / DENVER

DURANGO and DENVER - product line of modular chassis for outdoor (DURANGO) and indoor (DENVER) activity. Modular chassis are on purpose designed as a carrier for either standardised fully position and size adjustable seating system for children with special needs - TOM 5 (available in 3 sizes - MINI, STANDARD, MAXI), or as a carrier of made to measure seat-shells for seriously handicapped children with special needs (CSI-interface accessory required, not included in standard equipment). Modular frames are equipped with foot operated modular high-low adjustment and foot operated modular tilt in space adjustment to support and stabilize the sitting by everyday performed activities at school, at home, at rehabilitation clinic, etc. Both modular chassis are adjustable from 25 kg to 50 kg of user's weight, when seat unit is 5 kg. DURANGO may be optionally equipped with hand operated drum brakes.

accessories

Standard equipment:

- modular high-low adjustment function
- modular tilt in space adjustment function
- front and rear castor wheels with brakes (DENVER)
- 200 mm front solid / 300 mm rear air wheels (DURANGO)

Optional equipment:

- CSI-interface, angle and height adjustable footrest set

- 200 mm front solid / 400 mm rear solid wheels (DURANGO Xcountry)
- height adjustable and detachable ergonomic handlebar (DURANGO)
- frame colours (cover patterns) according to current offer
- trapeze interface
- hand operated drum brakes (DURANGO)

Products	
DURANGO XC	RKC171YYY
DURANGO	RKC161YYY
DENVER	RKC151YYY



DURANGO Xcountry



DURANGO

	DURANGO XC	DURANGO	DENVER
Chassis width clearance [mm]	(650)	(650)	(650)
CSI Interface to floor [mm]	430-760	430-760	260-540
CSI Interface tilt-in-space	+35°/-10°	+35°/-10°	+35°/-10°
Width-chassis	17,0 kg	16,0 kg	9,0 kg
Max load-chassis	60,0 kg	60,0 kg	60,0 kg
Total length [mm]	820	820	670
Total width [mm]	635	635	510
Total height [mm]	950	950	320

TOM 5-CSI (chassis)

Aluminium rehab-stroller modular chassis with CSI-interface

TOM 5 CSI



ALUX high-tech chassis
CSI interface (Chassis and Seat Interface)
Compact & Lightweight

TOM5 CSI

TOM5 CSI

Purpose made line of specially adjusted products, coming out from high-tech full-aluminum chassis of the Tom5 stroller's line, includes the CSI-interface. This products line is strongly determine for the seat-shell producers or for the seating professionals to provide customised solution of the seating arrangements. TOM5 - CSI - is produced by ALUX production method, ensures chassis very low weight and high durability. Fully foldable chassis to the extra compact size, includes among others chassis to seat-shell interface with very friendly tilt in space adjustment, safe brake system, spring-suspension, ergonomically shaped handlebar with the height adjustment. Additionally 260 mm (175/260 mm) solid wheels enables usage of the product not only in town but as well as for the light outdoor activities.

accessories

Standard equipment:

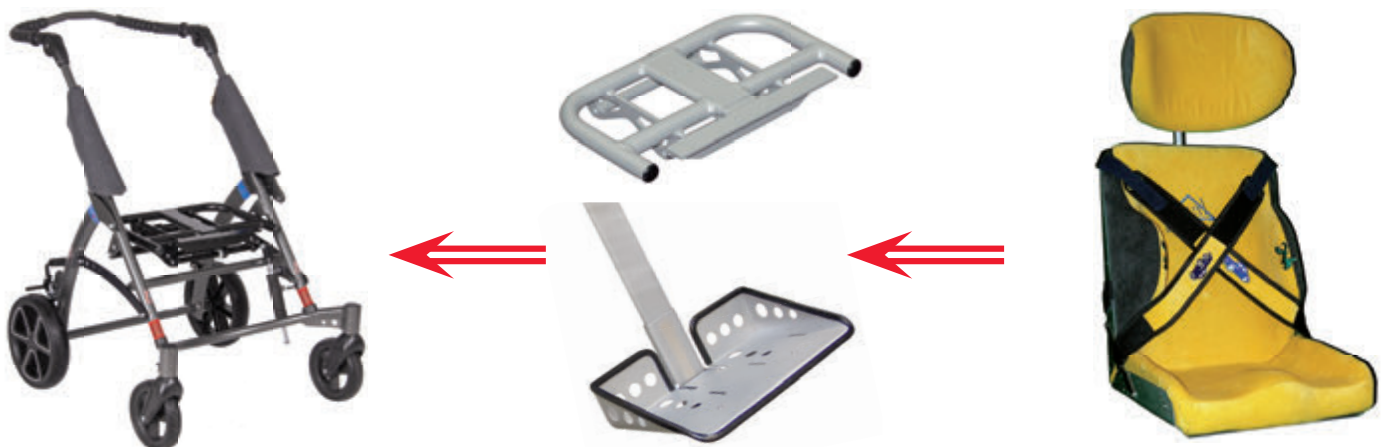
- detachable and reversible CSI-interface with the quick-release lock
- CSI-interface with fully adjustable tilt in space function
- 260mm (175/260 mm) solid wheels

Optional equipment:

- angle and height adjustable footrest set

- height adjustable ergonomic handlebar
 - basket, padded frame cover
 - chassis in CRASH TESTED version according to EN ISO 7176/19
 - frame colour according to the current offer
- air wheels (rear)

Products	
TOM5 - CSI MINI:	T5S30RP09
TOM5 - CSI STD:	T5S34RP09
TOM5 - CSI MAXI:	T5S38RP09
TOM5 - CSI SM42:	T5S42RP09



	MINI	STD	MAXI	SM42
Chassis width-clearance [mm]	360	400	440	480
CSI-interface to floor [mm]	490	490	500	500
CSI-interface tilt-in-space	+40° / (-25°)	+40° / (-25°)	+40° / (-25°)	+40° / (-25°)
Weight chassis	11,4 kg	11,8 kg	13,4 kg	14,0 kg
Maximum load	45,0 kg	45,0 kg	55,0 kg	55,0 kg
Total length [mm]	760	760	760	760
Total width [mm]	595	635	675	710
Total height /with adj.handle [mm]	1000	1000	1070	1100

TOM 4-CSI (chassis)

Rehab-stroller modular chassis with CSI-interface

TOM4 CSI



Lightweight steel frame
CSI interface (Chassis and Seat Interface)
3 sizes STANDARD, MAXI, SuperMAXI

TOM4 CSI

Purpose-made line of specially adjusted products, which comes out from approved conception of PATRON well-known TOM-strollers' line, includes purpose-adjusted chassis and the CSI-interface. This products line is strongly determine for the seat-shell producers or for the seating professionals to provide customised solution of the seating arrangements.

TOM4 - CSI - product line of fully adjustable special undercarriages is based on well approved design of the TOM-line undercarriages with 300 mm (200/300 mm) solid wheels, that enables usage of the products in town, as well as in light terrain. Fully foldable spring-cushioned undercarriage is produced from lightweight thin-walled tubes with powder coating finish. Undercarriage includes chassis to seat interface with the quick-release lock, new brake-system, ergonomically shaped height adjustable handlebar. Easy handling is ensured as well by the stroller's fully foldable frame.

accessories

Standard equipment:

- detachable and reversible CSI-interface with the quick-release lock
- CSI-interface with fully adjustable tilt in space function
- front fixed wheels(FFW) or front swivel castor-wheels(FSCW) version
- 300mm (200/300 mm) air wheels
- height adjustable ergonomic handlebar
- chassis in CRASH TESTED version according to EN ISO 7176/19
- frame colour according to the current offer

Optional equipment:

- angle and height adjustable footrest set
- air wheels (rear)

Products	
TOM4 - CSI Standard:	T4C34RP09
TOM4 - CSI MAXI:	T4C38RP09
TOM4 - CSI SuperMaxi 42:	T4C42RP09



	STD	MAXI	SM42
Chassis width-clearance [mm]	400	440	480
CSI-interface to floor [mm]	490	500	500
CSI-interface tilt-in-space	+21° / (-21°)	+21° / (-21°)	+21° / (-21°)
Weight chassis	11,5 kg	11,5 kg	13,5 kg
Maximum load	45,0 kg	55,0 kg	80,0 kg
Total length [mm]	845	845	845
Total width [mm]	580	620	670
Total height /with adj.handle [mm]	1000	1070	1070

SPECIALTY PRODUCTS

rehab-strollers for twins and siblings

- **TOM4 DUO**
 - **TOM4 DUO-COMBI**
-



TOM 4 DUO

Multipurpose fully foldable rehab-stroller for twins

TOM 4 DUO



Unique solutions for twins

TOM 4 DUO

TOM 4 DUO is based on the very well approved TOM-line design of rehab-strollers for handicapped children. The fully foldable undercarriage is produced from light weight thin-walled tubes with powder coated surface finishing. Seats of the stroller are detachable and can be independently placed in or against the driving direction. Seat shells are covered by fully detachable soft padded fabric upholstery in fashionable design. Easy handling is ensured by the front swivel castor-wheels with direction lock and as well by the stroller's fully foldable frame even with attached seats.

accessories

Standard equipment:

- two in function independent, detachable and independently reversible seats
- seats with fully adjustable tilt in space function
- fully reclining backrests
- height adjustable backrest
- adjustable depth of the seats with corresponding adjustment of footrests position
- width adjustable seats by FlexiPads set (optional

Optional equipment:

- hood, FlexiPads set, rain cover, headrest, side trunk

equipment)

- angle and height adjustable footrests
- 200mm front swivel castor-wheels / 300mm rear air wheels
- detachable side soft cushions
- detachable safety bars
- frame colour and fabric patterns according to the current offer

rest, 4-point immo. belt, hip rest, abduction block and other equipment according to the actual list

Products	
TOM 4 Xcountry DUO - MINI/MINI:	T4C68DPMM
TOM 4 Xcountry DUO - MINI/STD:	T4C68DPMY
TOM 4 Xcountry DUO - STD/STD:	T4C68DPYY

	M/M	M/S	S/S
Backrest height [mm]	450-600	combi	520-680
Seat depth [mm]	270-310	combi	270-310
Seat width [mm]	260/300	combi	240/280/340
Seat to footrest [mm]	140-280	combi	200-350
Backrest angle [°]	0°, 175°	0°, 175°	0°, 175°
Seat angle [°]	+/- 27°	+/- 27°	+/- 27°
Total length [mm]	1020	1020	1020
Total width [mm]	980	980	980
Total height /with handle [mm]	1010	1010	1010
Brake	foot oper.	foot oper.	foot oper.
Weight	28,0	28,0	28,0
Maximum load	60,0	60,0	60,0
Folded stroller length [mm]	900	900	900
Folded stroller width [mm]	980	980	980
Folded stroller height [mm]	550	550	550

TOM 4 DUO-COMBI

Multipurpose fully foldable rehab-stroller for siblings

TOM 4 DUO



Sensible solution for second child / siblings

TOM 4 DUO - COMBI

TOM 4 DUO - COMBI

Tom 4 DUO-COMBI is unique product solution for siblings, offering an advanced combination of rehab seat unit with the AMIGO carrycot for newborn baby or optionally also with the ERGO sporty seat unit later on. Tom 4 DUO-COMBI is based on quality approved TOM 4 – line, fully foldable undercarriage, equipped with rear air wheels (300 mm) and front swivel castor wheels (200 mm) ensuring easy handling. Comfortable seat unit and carrycot in fashionable design are detachable and can be placed in or against the driving direction. In addition both units can be used independently with their single original chassis to keep maximum components variability.

accessories

Standard equipment rehab seat:

- detachable and reversible seat
- seat with fully adjustable tilt in space function
- fully reclining backrest
- height adjustable backrest and depth adjustment of the seat-base
- width adjustable seat by FlexiPads set (optional equipment)
- angle and height adjustable footrest
- detachable side soft cushions
- detachable safety bar
- frame colour and fabric patterns according to the current offer

Optional equipment rehab seat:

- hood, FlexiPads set, rain cover, headrest, side trunk rest, 4-point immo. belt, hip rest, abductor block and other equipment according to the actual list

Standard equipment carrycot for newborn:

- AMIGO carrycot with oversized width (340 mm) and length (800mm) removable upholstery with pockets and hood with summer mesh reflexive safety marks

Optional equipment carrycot for newborn:

- ERGO sporty seat unit as follow-up solution summer accessory set, winter accessory set MIMMO Plus car seat

Products	
TOM 4 Xcountry DUO-COMBI - MINI:	T4C68DPCM
TOM 4 Xcountry DUO-COMBI - STD:	T4C68DPCY

	M/M	M/S
Backrest height [mm]	450-600	520-680
Seat depth [mm]	270-310	270-310
Seat width [mm]	260-300	240/280/340
Seat to footrest [mm]	140-280	200-350
Backrest angle [°]	0° - 175°	0° - 175°
Seat angle [°]	+/- 27°	+/- 27°
Total length [mm]	1020	1020
Total width [mm]	980	980
Total height /with handle [mm]	1010	1010
Brake	foot oper.	foot oper.
Weight	24,0	24,0
Maximum load	60,0	60,0
Folded stroller length [mm]	900	900
Folded stroller width [mm]	980	980
Folded stroller height [mm]	550	550

PATRON Bohemia a.s.

Ceskolipska 3419, 27601 Melnik, Czech Republic

Tel.: +420 315 630 135, +420 315 630 111

E-mail: reha.en@patron.eu

<http://www.patron.eu>

